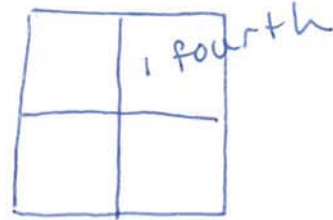
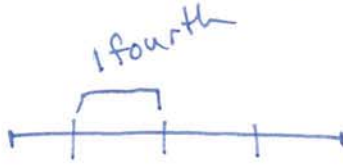
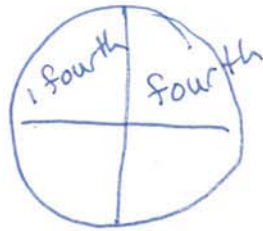


CCSS.MATH.CONTENT.3.NF.A.1

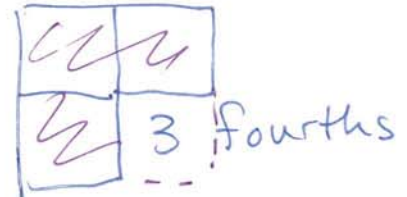
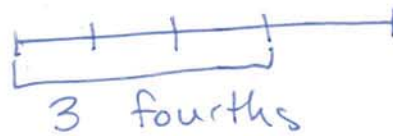
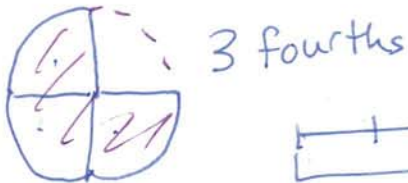
Understand a fraction $1/b$ as the quantity formed by 1 part when a whole is partitioned into b equal parts; understand a fraction a/b as the quantity formed by a parts of size $1/b$.

To show a $\frac{3}{4}$ of a whole unit, we start with a whole unit, and split it to make 4 equal parts. Then each part has

size $\frac{1}{4}$:

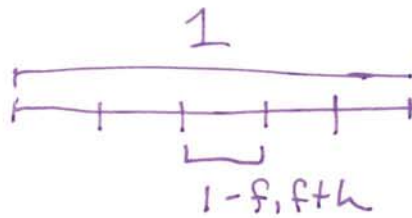


Next we take 3 parts, each of which are size $\frac{1}{4}$:



To show a $\frac{8}{5}$ of a whole unit, we start with a whole unit, and split it to make 5 equal parts. Then each part has

size $\frac{1}{5}$:



Next we take 8 parts, each of which are size $\frac{1}{5}$:

