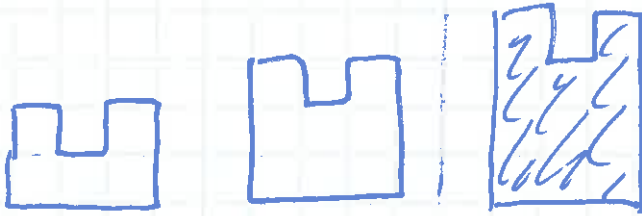


Draw the next one



n=1

n=2

n=3

5

8

11

Area / num. of boxes How to draw the tenth one?

$$2(n+1) + n$$

↑ 2 cols ↑ n+1 in each ↑ 1 col of n

middle col. is n tall

$$3n + 2$$

↑ n row in each row ↑ 2 more on top

Draw 3 columns (side by side)
 11 in first
 10 in second
 11 in third
 make it level at the bottom

10x3 ← 10 rows of 3 and one more square on each end at the top

Make a box that's 10 boxes up by 3 boxes across and add a box on the top on the first and third columns

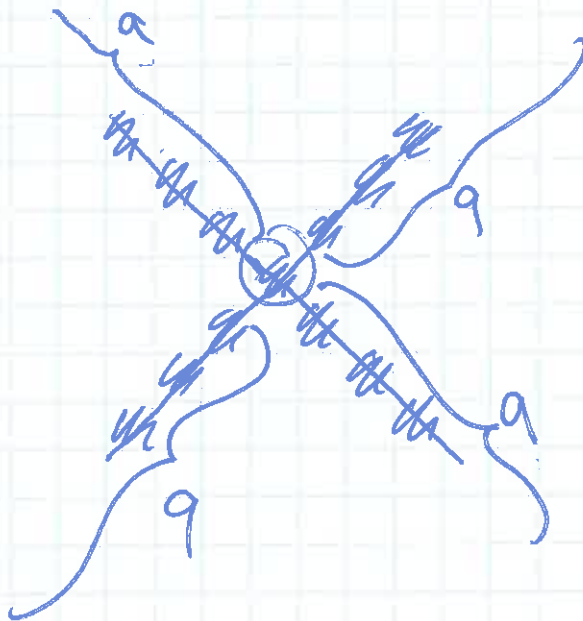
$$L \times W - 1$$

$$(n+1) \times 3 - 1$$

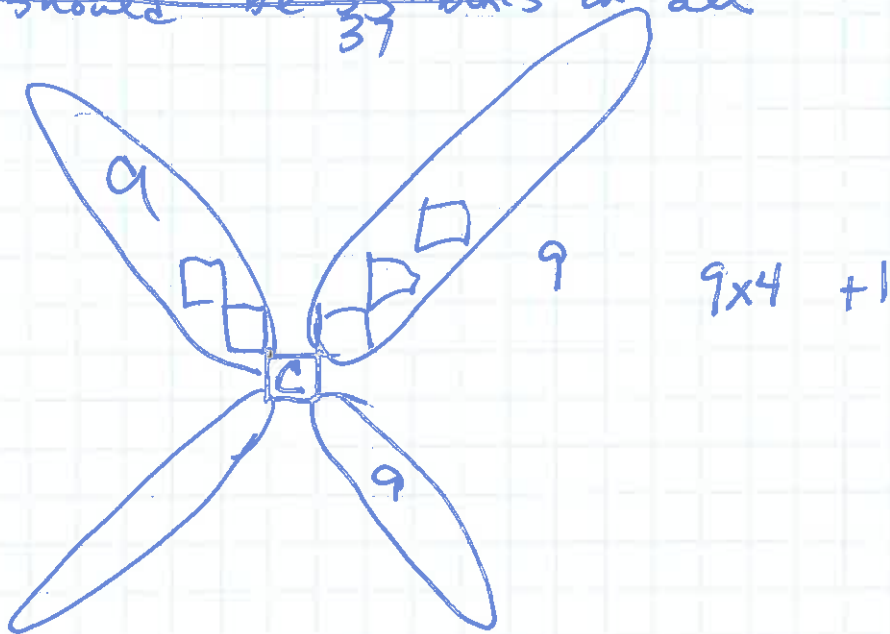
↓ box height ↓ box width ← top middle taken away

10+1 ← 11 high x 3 wide take away the top middle box

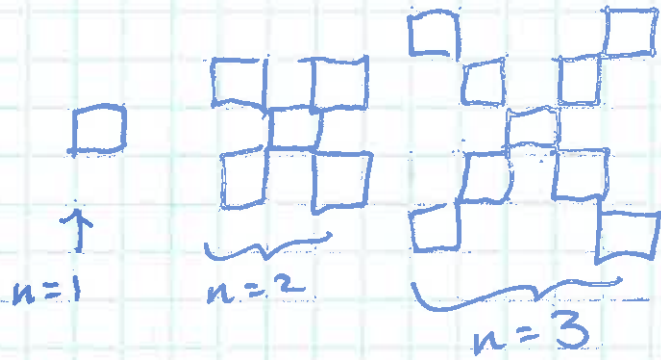
Make an X with 19 boxes on each axis



Start with a center box
add 9 boxes on each corner w/ only corners touching
~~there should be 33 boxes in all~~
37



draw next



write instructions for
n=10

19
+9-1 [Make an X with
19 boxes on each axis

$4(n-1) + 1$
 ↑ ↙ ↘
 4 sections 9 boxes in each section
 ← center block

$(n-1)$
 9×4
 $+ 1$

[Start with a center box
add 9 boxes on each corner with only corners touching.