

Crystal with Five Transformations

IFS with five similarity transformations. Can you see Koch curves in the attractor?

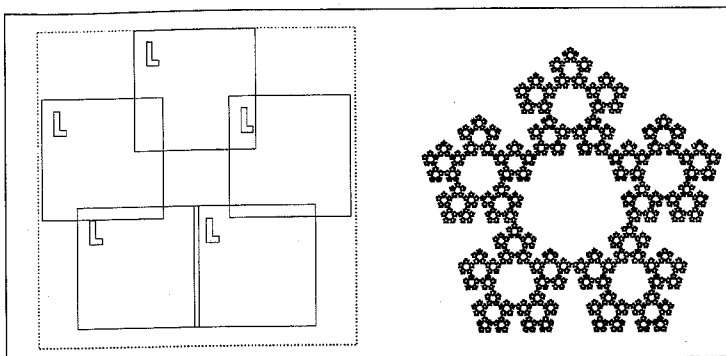


Figure 5.15

A Tree

The attractor of an MRCM with five transformations can even resemble the image of a tree (the attractor is shown twice as large as the blue-print indicates).

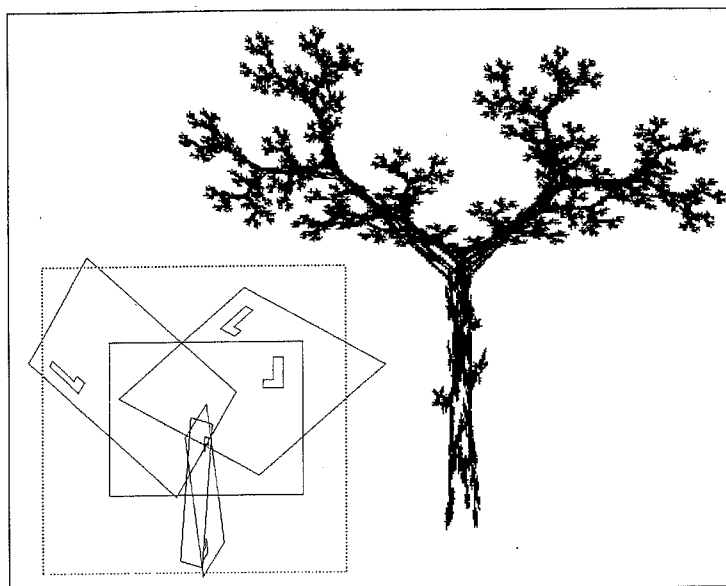
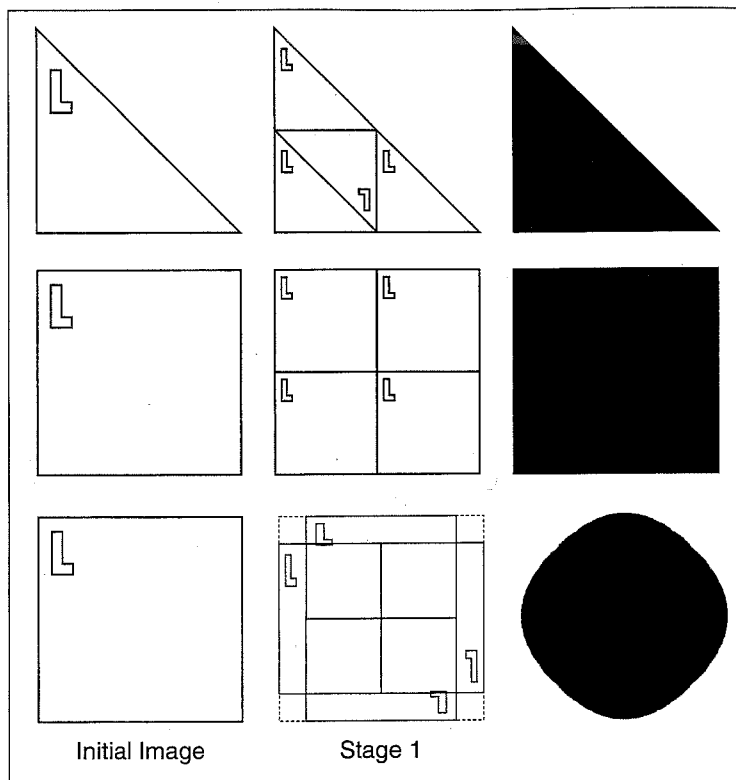


Figure 5.16



IFS Encodings of Triangle, Square, and Circle

Figure 5.17

The Twin Christmas Tree

Another IFS with three similarity transformations with scaling factor $1/2$.

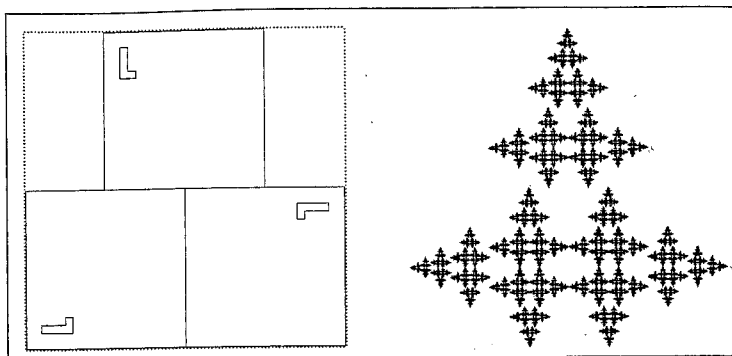


Figure 5.10

A Dragon With Threefold Symmetry

The white line is inserted only to show that the figure can be made up from three parts similar to the whole.

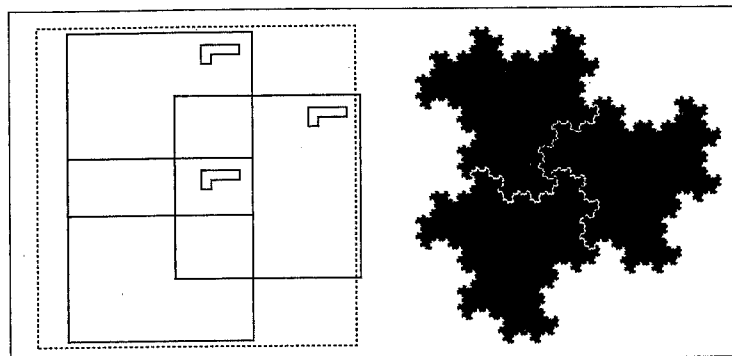
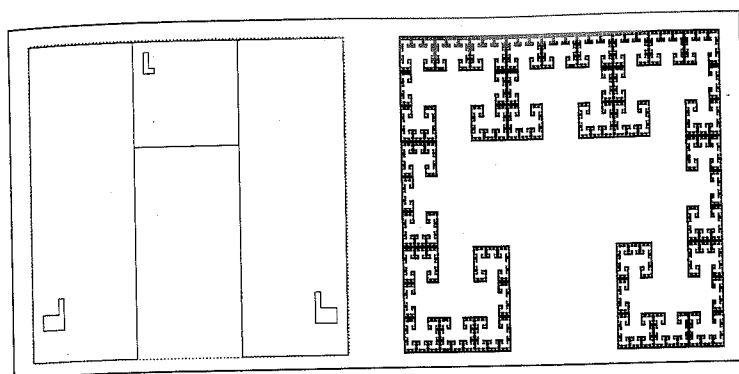


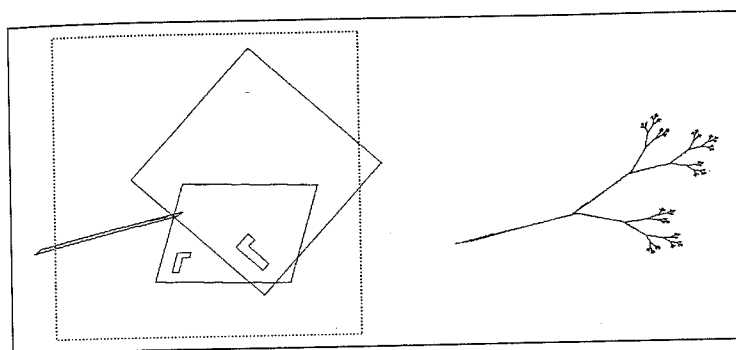
Figure 5.11



The Cantor Maze

IFS with three transformations, one of which is a similarity. The attractor is related to the Cantor set.

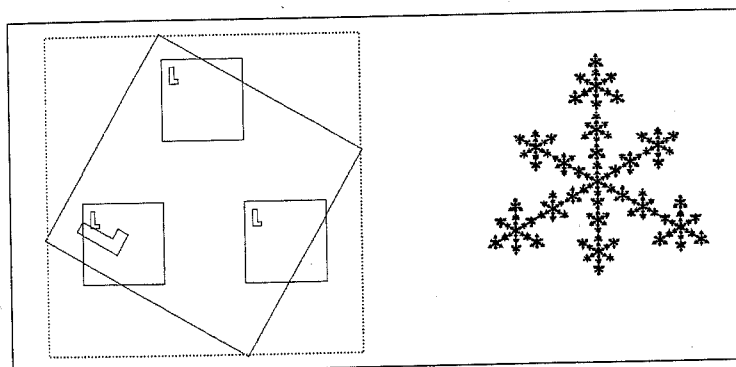
Figure 5.12



IFS for a Twig

IFS with three affine transformations (only one similarity).

Figure 5.13



Crystal with Four Similarity Transformations

Figure 5.14